

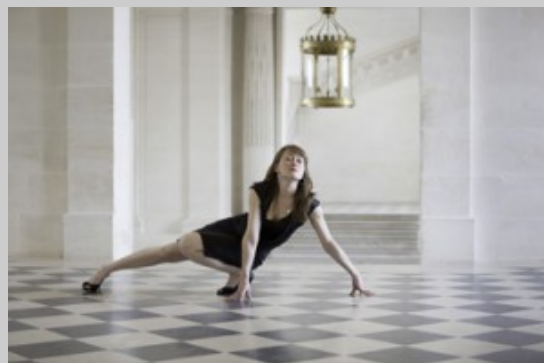


Filigranes
Éditions

Chevaleresque

Rip Hopkins

Pauline de La Boulaye



Through this series of portraits, Rip Hopkins reveals how the inhabitants of Maisons-Laffitte, a city historically connected with horses, collect and appropriate the horse in their imagination. Northwest of Paris, bordering the forest of Saint-Germain-en-Laye, is a city haunted by the presence of horses since the late eighteenth century. The racecourse has the longest straight line in Europe. Men and horses live together.

Trails are planned to travel on horseback. The mounted animal always has priority. An anachronistic castle recalls earlier times to the modern industrial, where the horse was the closest ally of man. His legendary monumental stables have now disappeared. Castle also houses – thus it is called – spends annually a command to a photographer to represent the horse in its walls. Presence of paper instead of living, somehow. In all fields of contemporary creation, the theme of the horse seems to have been deserted when he was a mythological being and ultimate source of countless fabulous stories. Is its symbolic power.

Coproducer

Ville de Maisons-Laffitte,
les Monuments
nationaux, la société des
amis du château de
Maisons, le Conseil
Général des Yvelines.

Released

03/07/2012

Collection

Hors Collection

Format

220 x 220

Français

Relié couverture cartonnée et toilée

33 photos colors

72 pages

ISBN : 978-2-35046-256-1

25 €



Filigranes Éditions - Paris
Carré Bisson, 10 bis rue Bisson
75020 Paris
T +33 (0)6 31 20 20 23

Filigranes Editions
3 lieu-dit Toul Guido
22140 Landebaëron
T +33 (0)6 31 20 20 23

www.filigranes.com
filigranes@filigranes.com