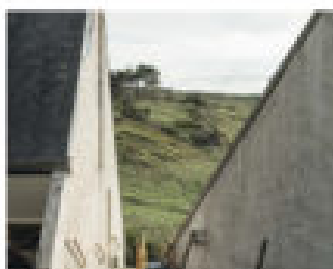
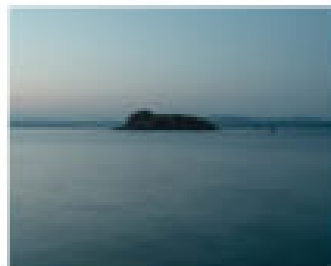


# De la limite à la marge

Marc Loyon

Fabien Ribery



"It was during an artist residency organized by the Center des arts de la ville de Douarnenez in 2017 that I discovered Marc Loyon's work: he came to present his wish to me to enter the reserves of the Port-museum to capture the dimension of an "extraordinary" collection kept in spaces that are no less so.

He didn't have much trouble convincing me and I have fond memories of this first exchange: as he presented his work in progress and his older prints, the names and research of Bernd and Hilla Becher, Robert Adams or John Davies remembered my memory. Undoubtedly there is in Marc Loyon's approach a filiation, a kinship of spirit with them: an aspiration to grasp a landscape in transformation, to grasp a reality on the ground by exploring its urban model; and then to discover its peripheral zones, its setbacks, its ambivalences, its accumulated stigmata as much as its contemporary tourist smoothing, all with a personal and singular writing.

Jean-Sylvain Roveri, the director of the Center des arts, had the good idea to invite him from March to June 2017 to explore the city of Penn-Sardin, a work he could then extend briefly to the popular district of Kermarron thanks at the Maison Solidaire, a place of life and entertainment organized by and for the inhabitants. "

*Kelig-Yann Cotto*

Coproducer

Port-musée, Douarnenez

Released

18/03/2020

Collection

Hors Collection

Format

250 x 195

Français

Relié couverture cartonnée

58 photos colors

96 pages

ISBN : 978-2-35046-493-0

25 €



Filigranes Éditions - Paris  
Carré Bisson, 10 bis rue Bisson  
75020 Paris  
T +33 (0)6 31 20 20 23

Filigranes Editions  
3 lieu-dit Toul Guido  
22140 Landebaëron  
T +33 (0)6 31 20 20 23

[www.filigranes.com](http://www.filigranes.com)  
[filigranes@filigranes.com](mailto:filigranes@filigranes.com)