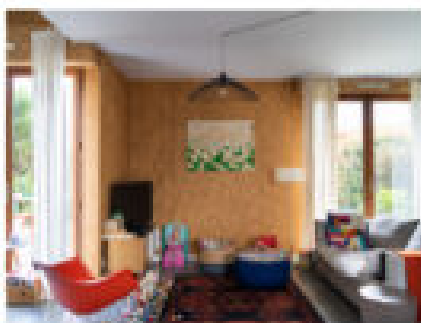
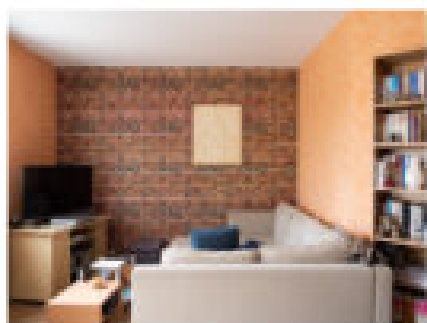
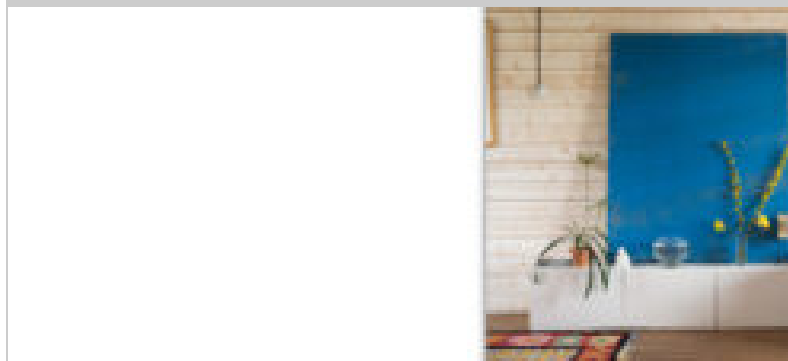


Salonfähég Pierre Galopin

Isabelle Tessier, Louis-Michel Nourry, François Perrodin, Laurent Grivet



Selfähég: adj., German, goal Also used in English, Danish, Dutch and Luxembourg: Socially acceptable, preset.

I am interested in the relationship between the work with the decoration. My work is the reflection, or I say that one can offer a work of art playing with the most conventional aesthetic codes.

The Selfähég photographic work was born from the desire to restore a contextual place of its own, and paradoxically invisible: the place of the living room. The painting as a decorative object hanging on a wall, above a sofa, a table, etc. a place that is fundamentally intended for it.

Louise Lawler is less interested in the original process of creating the work of art than in which it is necessarily located and which depends heavily on the sphere of influence of the artist. It appears that intrinsic plastic qualities to a paint may be in contact with its environment and constitute autonomous photographic work.

This work aims to emphasize these formal relationships as well in paintings that I install indoors, or ceded paints that I will take from individuals without modifying the interior. It highlights the day-to-day traffic and presentation operations and is a long-run work.

Coproducer

Artothèque de Vitré,
FRAC Bretagne, Ailes de
Caïus

Released

21/10/2021

Collection

Hors Collection

Format

300 x 240

Français

Relié couverture cartonnée

56 photos colors

112 pages

ISBN : 978-2-35046-525-8



Filigranes Éditions - Paris
Carré Bisson, 10 bis rue Bisson
75020 Paris
T +33 (0)6 31 20 20 23

Filigranes Editions
3 lieu-dit Toul Guido
22140 Landebaëron
T +33 (0)6 31 20 20 23

www.filigranes.com
filigranes@filigranes.com