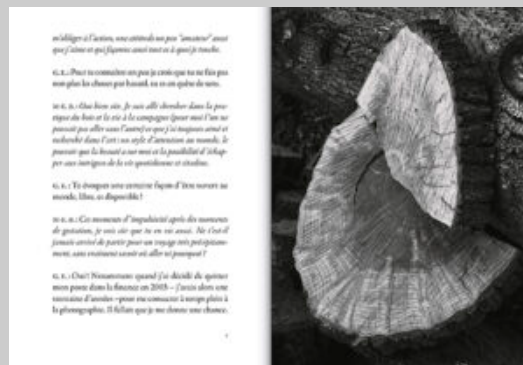
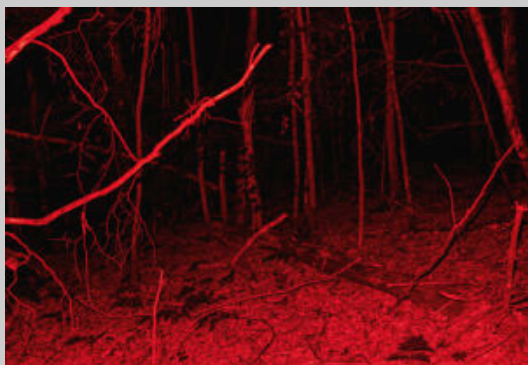
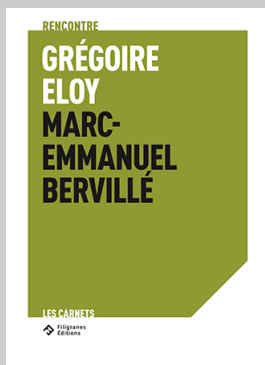


**Grégoire Eloy**  
**LA PARCELLE**  
**Grégoire Eloy**

Marc-Emmanuel Bervillé



"The artistic project deals with utopia, the idea of ??life in the forest, as if, for example, there was a question of reliving Thoreau's experience. From a naked forest plot, build a hut , live there. Photography comes to record the experience and extend it. Once carried out, the cabin also becomes a place of residence and a laboratory which make it possible to produce images of another register, linked to the landscape, to its imprint on silver paper. The artistic part is therefore inseparable from the construction, one nourishes the other: the experience lived on the plot justifies the production of photographs and vice versa, the production of photographs calls for experience-as an author who would multiply the Life experiences to feed your autobiographical story ...  
[...] We had to wait for night to fall, enter the forest in the light of the front, pass it red to handle the photosensitive paper. You quickly feel very vulnerable, you feel wipped, for lack of landmarks and usual, or it is the fear of black simply.  
G. E.

Coproducer

Le champ des  
impossibles

Released

03/06/2022

Collection

Les Carnets

Format

120 x 165

Français

Broché

28 photos colors and balck and withe  
64 pages

ISBN : 978-2-35046-577-7

10 €



Filigranes Éditions - Paris  
Carré Bisson, 10 bis rue Bisson  
75020 Paris  
T +33 (0)6 31 20 20 23

Filigranes Editions  
3 lieu-dit Toul Guido  
22140 Landebaëron  
T +33 (0)6 31 20 20 23

www.filigranes.com  
filigranes@filigranes.com