

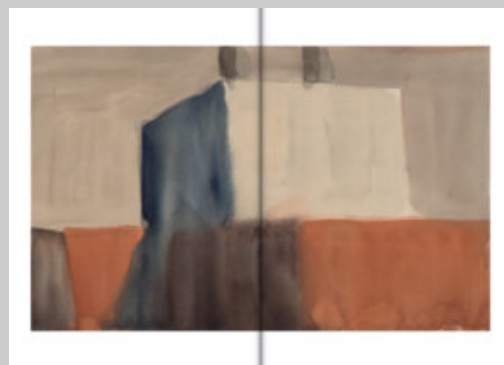
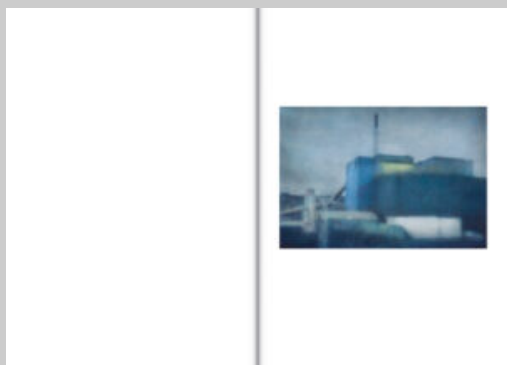
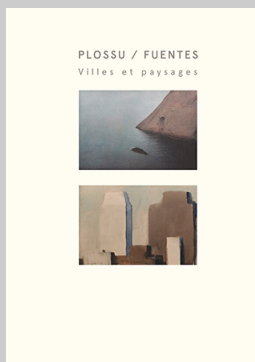


Filigranes
Éditions

Plossu / Fuentes

VILLES ET PAYSAGES

Bernard Plossu, Marcelo Fuentes



This dual Plossu/Fuentes book brings together the works of Bernard Plossu and Marcelo Fuentes, highlighting their shared interest in landscapes and cities as well as their similar artistic approach.

"Bringing together the works of Plossu and Fuentes allows us to shed light on certain questions, such as the distance between act and work in both mediums, the unequal perception of time in painting and photography. John Berger wrote that from the moment the photographic image is produced instantaneously through light, the figure is not imbued with either experience or consciousness; the photographer, it's true, chooses the subject, but the relationship between the image and its representation is immediate, it's not constructed, unlike the one established by the painter, whose work contains the time spent creating it." – Salvador Albiñana

In addition to their shared interest in painting and photography, Plossu and Fuentes are both traveling artists who prefer to work with smaller formats. By bringing together their works, the exhibition allows the exploration of questions such as the relationship between action and the artwork in both mediums, as well as the differentiated perception of time between painting and photography.

Coproducer

Galerie Camera Obscura

Released

21/08/2023

Collection

Hors Collection

Format

230 x 330

Français

Relié couverture cartonnée

40 photos/aquarelles colors and black and white

64 pages

ISBN : 978-2-35046-611-8

40 €



Filigranes Éditions - Paris
Carré Bisson, 10 bis rue Bisson
75020 Paris
T +33 (0)6 31 20 20 23

Filigranes Editions
3 lieu-dit Toul Guido
22140 Landebaëron
T +33 (0)6 31 20 20 23

www.filigranes.com
filigranes@filigranes.com